



Product overview

The AX-E07xx series controller is a stand-alone, microprocessor based controller with 10 icons and 4-digit LCD display. The controllers are designed to control the fans, valves, compressors or electric heaters in fan-coil unit and air-conditioner applications. The models are available for heating or cooling On/Off, Raise/Lower or Proportional control of 2-pipe or 4-pipe fan-coil units requiring analogue inputs.

Features

- Proportional and Integral Algorithm
- Intuitive User Interface
- For two or four pipe fan coil applications
- Remote sensor option
- Accurate Temperature Control
- Heating/Cooling and 3 speed fan output

Product specifications

Operating Voltage:	24Vac
Power Consumption:	6VA (without load)
Occupied Temperature Setting:	0 to 55°C
Setpoint Range:	10 to 30°C default 23°C
Setpoint Resolution:	0.5°C
LCD:	Backlight - Green
LCD Size:	67 x 52mm
Display Resolution:	0.2°C
Output: depends on unit	Open/Close 1A @230Vac Raise/Lower 1A (0.5) @230Vac 150 or 300 secs 0 to 10Vdc modulating 10mA
Fan Switch:	Three Speed Fan Switch 2A(1) @ 230Vac
Mode Switch:	Cool-Off-Heat
Control Performance:	Adjustable Proportional plus Integral (PI) Control
Connections:	Two Part Terminals suitable for 1.5mm ² wires
Temperature Sensor:	10K3A1 Thermistor can be remote (see J3)
Mounting:	Wall mounting, standard single gang back box
Dimensions & Weight:	86(W) x 96(H) x 20mm(D) 160gms

Order codes

AX-E07A	Heating On/Off Fan Coil Controller
AX-E07B	Cooling On/Off Fan Coil Controller
AX-E07C	Heating and Cooling On/Off Fan Coil Controller
AX-E07F	Heating or Cooling Raise/Lower Fan Coil Controller
AX-E07P	Heating or Cooling Modulating Fan Coil Controller

Order Online at:
www.annicom.com
Email orders and enquiries to:
Sales@annicom.com

Installation

IMPORTANT, PLEASE READ CAREFULLY

A qualified electrician should always be employed to install this unit.
Current safety regulations must be observed.

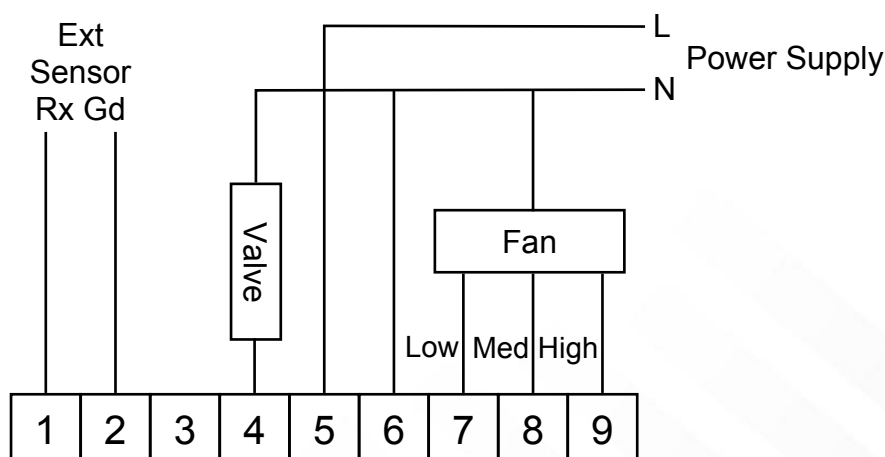
Under no circumstances should electrical connections be made whilst power is applied to the unit.

INSTRUCTION

- Cool/heat shift:** (SRE07A/B/C) in 2-pipe system, the thermostat is on Cooling state when the Power Supply switch is at position "❄️"; on Heating state when the Power Supply switch is at position "🔥"; and, the thermostat is shut off when the Power Supply switch is at position "⬛". In 4-pipe system, the thermostat can only output heating or cooling signal according to the position of Power Supply switch. When the power switch is turned to position "⬛", the thermostat will self-check, and then make the valve run for 150 seconds (or 300 seconds) continuously towards the closing position. When it finishes operation, the thermostat will enter into turn off state. When the power supply switch turns to "❄️", the LCD will show the cooling state symbol "❄️", the action signal will output forward; when it moves to "🔥", the LCD will show the heating state symbol "🔥", the action signal will output backward. When it moves to "⬛", the LCD will shut off, the valve will run for 150 seconds (or 300 seconds) continuously towards the closing end, then the system will be shut off.
- Fan:** When the thermostat is in cooling or heating state, turn the fan switch 🌀-🌀-🌀, the LCD will display corresponding air volume symbol. The terminals will output power and provide operating power for the fan. If the thermostat isn't connected to the fan, only 🌀 or 🌀 can be shown on the LCD. The symbol 🌀 can only be shown when the thermostat is connected to the fan correctly.
- Temperature setting:** When user presses Δ (increase) / ∇ (decrease) button, LCD display temperature setting will show increase or decrease accordingly. The increase/decrease rate is 0.2°C/0.5 °F. The adjusting range is 10~30°C/50~86 °F. When user stops pressing the button for over 5 seconds, the thermostat will change the setting temperature data in its memory, and then the LCD shows the ambient temperature. (The ex-factory setting point is 25°C/77 °F.)
- Built-in/external sensor:** When built-in NTC thermistor is used, the jumper J3 should be put to position "Int". If the external NTC sensor is used, the jumper J3 should be put to "Ext" position.
- Fixed setting temp. function:** Put the jumper JP4 to position 1, the setting point can't be changed by pressing increase or decrease buttons. (The default setting is on position 0. The setting point can be changed by pressing increase or decrease buttons)

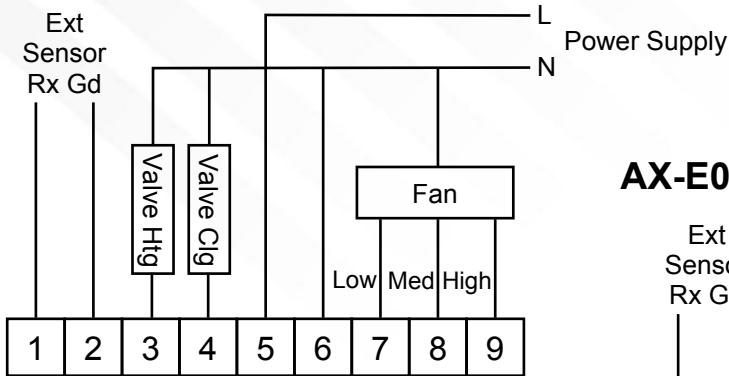
Connection Details

AX-E07A/B

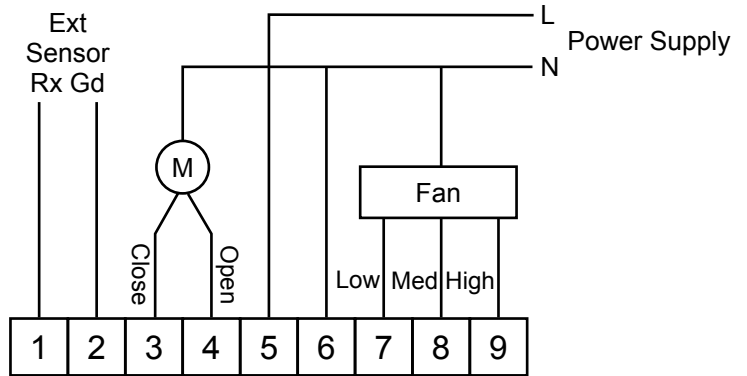


Connection Details

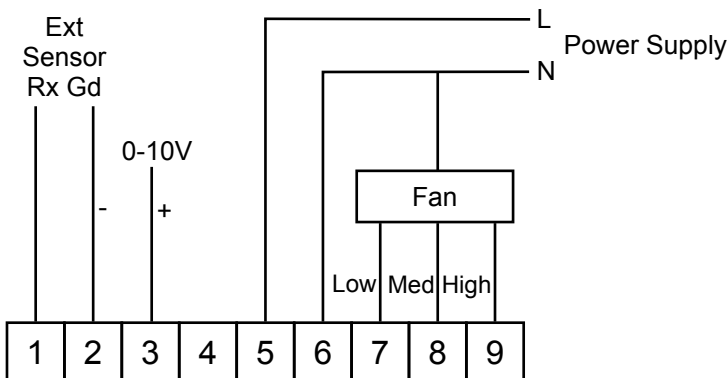
AX-E07C



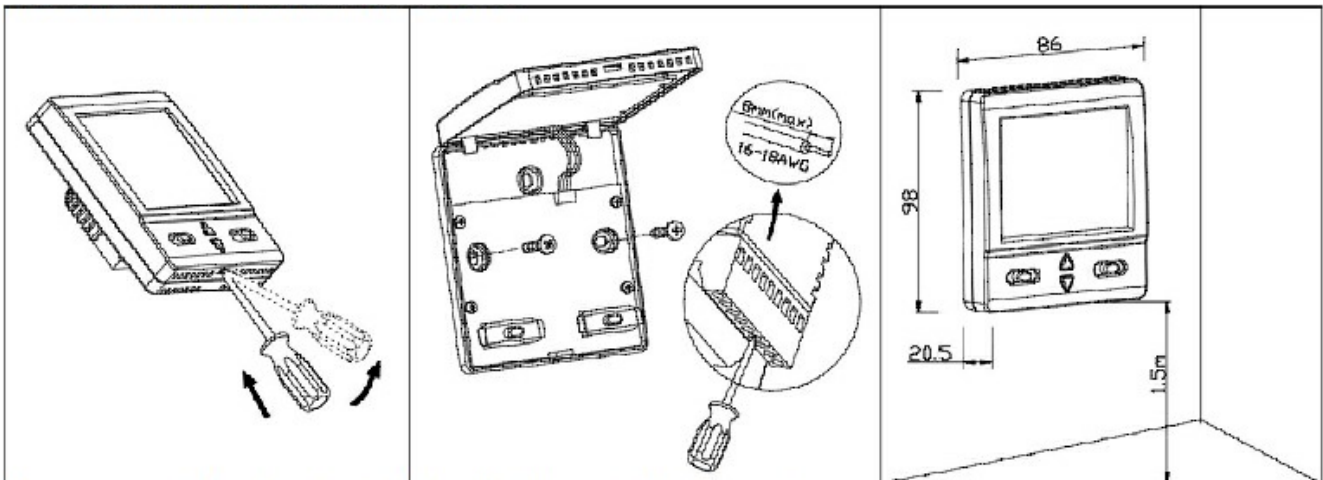
AX-E07F



AX-E07P



Installation Instruction



Please remove the wiring terminal from the thermostat before wiring.

Every effort has been taken in the production of this data sheet to ensure accuracy. Axio do not accept responsibility for any damage, expense, injury, loss or consequential loss resulting from any errors or omissions. Axio has a policy of continuous improvement and reserves the right to change this specification without notice.